

# The Great Fire of London

city	A large town with a cathedral. London is a city.
destroyed	Something that is completely ruined.
flames	Fire
flammable	Something that catches fire easily and burns.
spread	When something can move quickly – the fire spread across London.



London in 1666

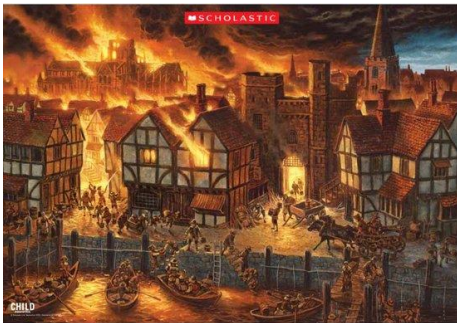


London today



The fire started in a bakery in Pudding Lane. A baker called Thomas Farriner got the blame for it!

The Great Fire of London lasted 3 days. Lots of houses had to be rebuilt.



A fire hook, bucket and hose. These were old fashioned tools to put out the fire.

Samuel Pepys kept a famous diary which told us all about the fire.

