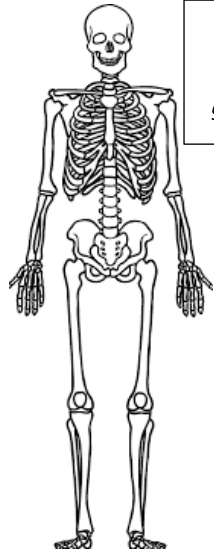
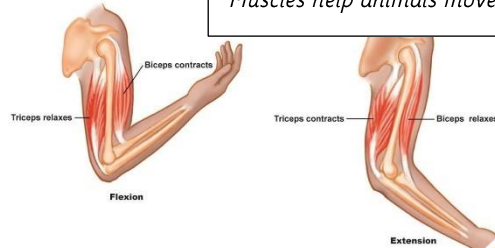


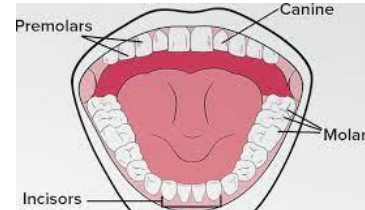
## Animals, including humans



Humans and many animals have a bony skeleton to give them strength.



Muscles help animals move.



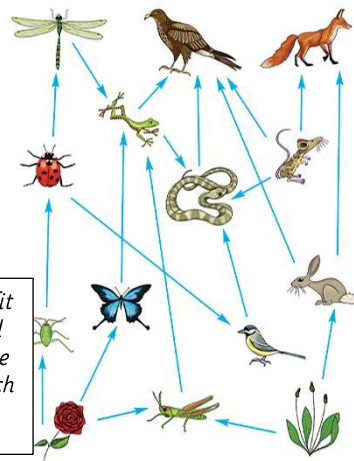
Our teeth have different names for different jobs.



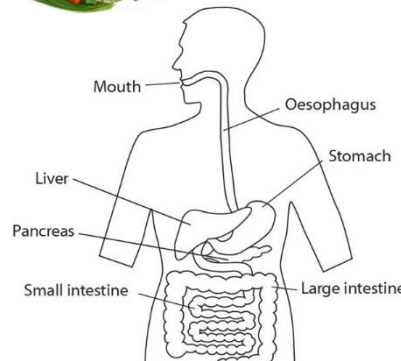
We must give our bodies a balanced variety of food.



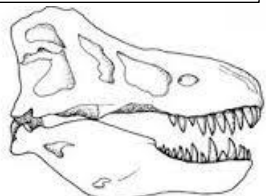
The heart pumps blood around our body, transporting oxygen, water and other nutrients.



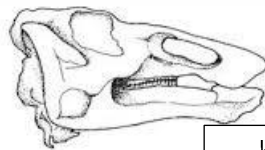
Animals and plants fit together into a food web which shows the flow of energy as each individual is eaten.



The human digestive system.



Carnivore teeth



Herbivore teeth

We can tell what an animal eats from its teeth.

Vocabulary	
Key Words	Definitions
Balanced diet	Good variety of food groups giving us the energy we need.
Canine	Sharp, pointed teeth; used for slicing.
Carnivore	Meat-eating animal.
Digestive system	Group of body parts used to break down our food into energy.
Exoskeleton	Some animals like insects and crabs have this. It is a hard-outer casing.
Herbivore	Plant-eating animal.
Incisor	Front, thin teeth; used for slicing.
Intestine	There are two sections of this long part of the digestive system. Its job is to finish extracting water and nutrients from our food.
Invertebrate	An animal without a spine.
Molar	Back, flat teeth; used for crushing and grinding.
Oesophagus	Food pipe connecting the mouth and stomach.
Oxygen	Gas in the air we breathe which we need to survive.
Predator	Animal which hunts its food.
Premolar	Flattish teeth; used for crushing and grinding.
Prey	Animal which is hunted.
Producer	Part of the food chain which gets its energy from the Sun.
Skeleton	The bones inside an animal.
Spine	A backbone.
Stomach	Part of the body which breaks down food.
Vertebrate	An animal with a spine.