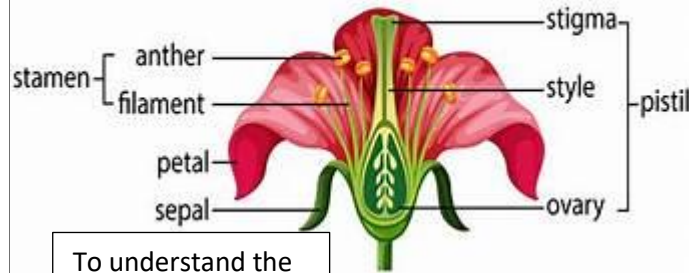


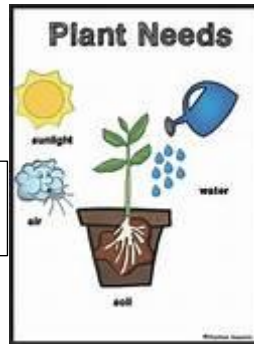
## Vocabulary

|                |  |
|----------------|--|
| air            | Consists of many gases but relevant here are nitrogen 78%, oxygen 21%, carbon dioxide 0.03%                          |
| light          | The energy plants require to make food.  |
| water          | Used to dissolve CO <sub>2</sub> , to transport nutrients, to keep cells turgid, to germinate seeds, to make sugars. |
| nutrients      | Chemicals for life   |
| soil           | Anchoring, water and nutrients   |
| reproduction   | To create new organisms  |
| transportation | Movement of chemicals  |
| dispersal      | Spreading seeds  |
| pollination    | Fertilizing to create seeds  |
| flower         | Attraction of insects  |

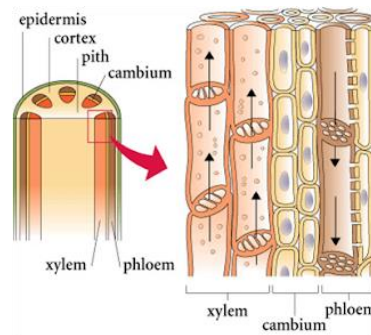
## Common Flower Parts



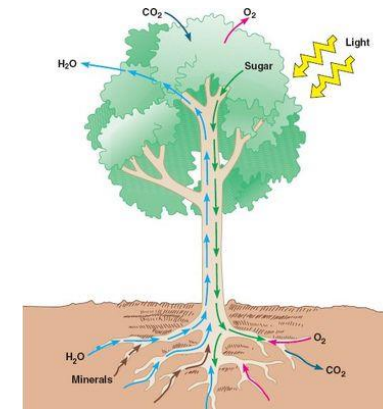
To understand the reproductive parts of a flowering plant



What do plants need to grow?

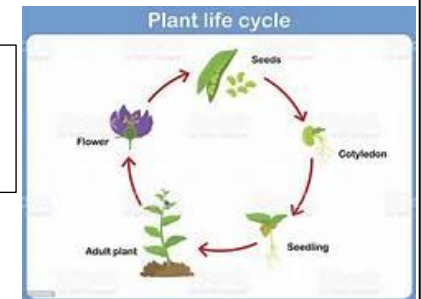


How do plants transport water, food and nutrients?

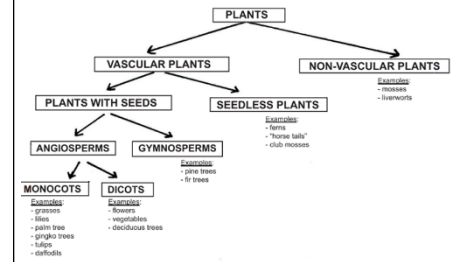


How do plants transport water, food and nutrients?

How do plants reproduce?



Can we classify plants including placing them in their scientific groups?



# Plants