



## CL

- Asks questions to find out more and check understanding
- Articulate ideas and thoughts in well-formed sentences
- Use talk to help work out problems and organise thinking and activities, and to explain how things work and why they might happen
- Describes events in some detail

## PD

- Develop their small motor skills so they can use a range of tools competently, safely, and confidently
- Confidently and safely use a range of large and small apparatus indoors and outside

## PSED

- Think about the perspectives of others
- Show resilience and perseverance in the face of challenge
- Consider the feelings of others
- See self as a valuable

## Theme: Animals (Animal Park)

## EAD

- Create collaboratively, sharing ideas, resources and skills
- Return to and build on previous learning, refining ideas

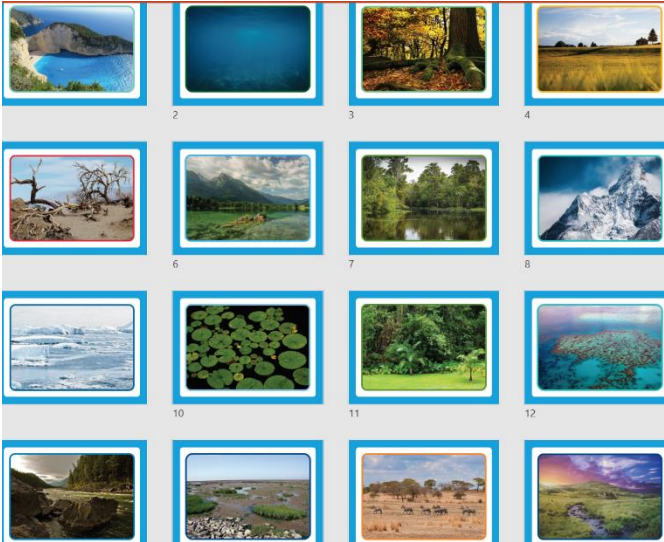
## UW

- Comments on images of familiar situations in the past
- Compares and contrasts characters from stories, including figures from the past
- Recognises some environments that are different to the one in which they live
- Explores the natural world around them
- Describe what they see, hear, and feel whilst outside
- Draw information from a simple map
- Name and describe people who are familiar to them

## Key Vocabulary

Protect, expert, survive, carnivore, herbivore, omnivore, scientist, zoo, vet, Animal Park, pet, wild, habitat

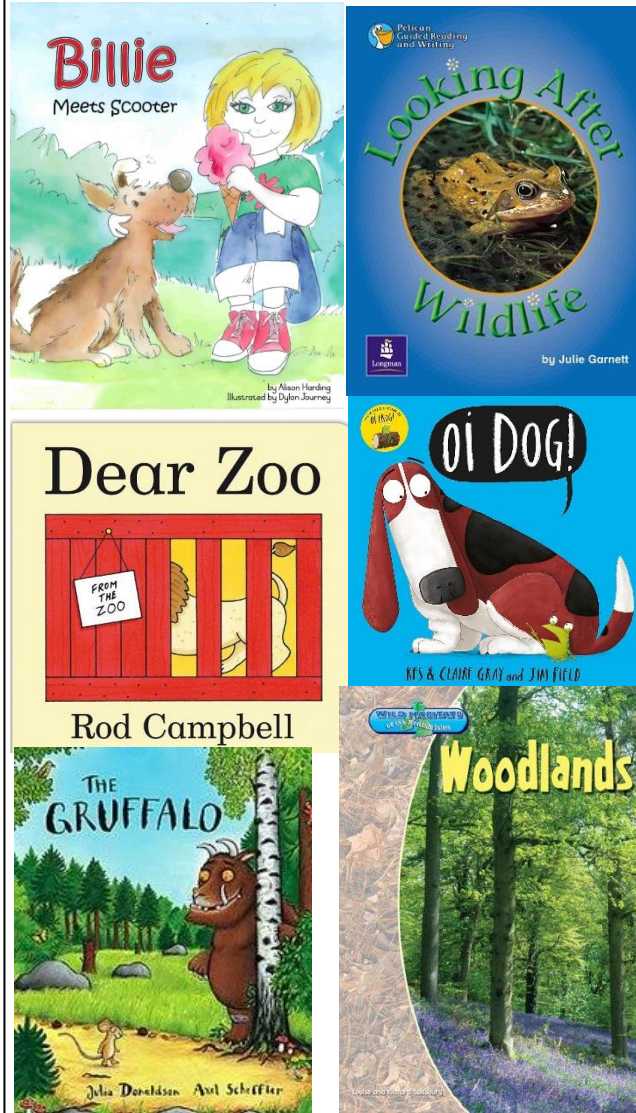
Example Habitats



Creating and using simple maps



Key Texts



Key Vocabulary

Protect	Look after, defend, care for
Expert	Someone who knows a lot about something
Survive	Stay alive
Carnivore	An animal that eats flesh
Herbivore	An animal that eats plants
Omnivore	An animals that eats flesh and plants
Scientist	An expert in science – someone who knows a lot about the world
Habitat	Where something lives
Zoo	A place where animals are kept for people to look at
Vet	A doctor for animals
Wild	Living in nature
Animal park	A place where wild animals are kept in large spaces that are like their normal habitats
Rescue	To free or save from difficulty or danger
Pet	An animal kept as a friend and looked after lovingly

