

Key Stage 1 vocabulary:

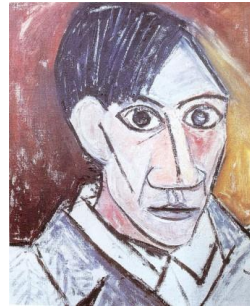
line	A long mark drawn with a tool.
sketch	A quick drawing with few details.
light	Used to make your drawing brighter.
shadow	Used to make your drawing darker.
shade	A technique to make your drawing darker.

Key Stage 2 Vocabulary:

positive space	The space which shows the subject of the drawing.
negative space	The space which shows the area around the subject of the drawing.
scale	The size of the drawing. Sometimes you might change the scale to make your subject smaller than it is in reality.
tone	The lightness or darkness of a shade or colour.
proportion	The height/length, depth and width of a drawing.
perspective	The technique used to represent what we see in the world (3D) on a 2D surface such as paper.

Artists studied:

Oak - Pablo Picasso



Picasso was famous for exaggerating facial features. We can explore drawing anatomy with his work.

Willow - Stephen Wiltshire

Wiltshire uses perspective and proportion effectively to draw landscapes.



Holly - Marcello Barenghi



Barenghi sees light and shadow in real life and tries to create it in his work.

Techniques:

Drawing

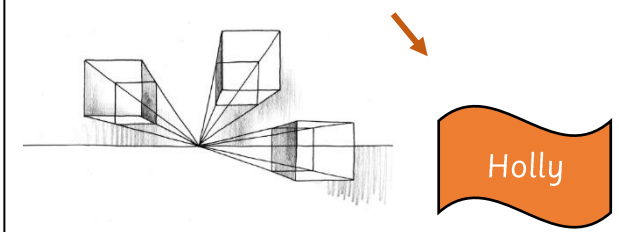


Using tools to create lighter and darker shades.



Decorating the positive space

Decorating the negative space



Observing perspective by extending from a fixed point.

