

Subject on a Page



Music

At Rolvenden, we believe that Music forms an integral part of a holistic education and should inspire children's love for listening to and creating music and song in a variety of musical contexts. Music is a universal language of emotion and creativity,



Intent - What do we aim to deliver?

Foundation Stage children usually participate in weekly 15 minute lessons, have access to musical instruments as part of their continuous provision every day, and join in with songs and rhymes throughout the school day as part of their wider curriculum learning. In KS1 and KS2, Music is typically taught in weekly 45 minute lessons and is supplemented by regular singing opportunities in assembly.

Playing

Children learn to play a tuned percussion, string, and wind instrument as they move up the school.

Singing

Children learn how to use their voices effectively for song.

Listening and Appraisal

Children gain the musical skills and knowledge needed to appreciate, discuss, and critique music from around the world.

Performance

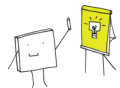
Children are given opportunities to perform musically to audiences and for recording, inside and out of school.

Improvisation

Children make changes to simple repeated rhythms,, simple tracks, and songs being learnt and/or performed.

Composition

Children create melodies of increasing complexity, making musical decisions and reflecting on their work



Implementation - How do we aim to deliver it?



Charanga and BBC 10 Pieces

Teachers use Charanga and BBC 10 Pieces to inform and support high quality music teaching that is appropriately pitched to individuals and follows a clearly sequences progression. During their musical learning, children develop a range of skills, including: composition, improvisation, performance, analysis, and evaluating.

Learning an Instrument

A specialist teacher provided by Kent Teach delivers violin lessons to year 3 and 4 children on a weekly basis. Individual tuition for a variety of instruments is also available.



Cultural Capital and Enrichment

Cultural days, live performances, theatre trips, and extra-curricular opportunities build children's cultural capital. Performances in school and community events enrich their musical lives.



Impact - How will we know when we have delivered it?

Well-being and Enjoyment

Music lessons observe high levels of well-being and enjoyment for all pupils and children are confident to perform in front of others. They discover new interests and talents and demonstrate a love and appreciation of music.



Musical Language

Children have widened vocabulary and use descriptive language in response to music. They also talk confidently about their learning in music lessons, using appropriate and technical vocabulary.

Whole Curriculum Impact

Children have an understanding of culture and history in relation to music as well as how music differs between ethnicities. They are confident to apply their musical talents to other curriculum subjects , such as rhythm in poetry and dance.

