



Geography Skills

- Understand geographical similarities and differences through studying the human geography of a small area in the UK.
- Use basic geographical vocabulary to refer to human features (village, farm, house, shop, church).
- To use map, simple compass directions and directional language.
- Devise a simple map; use aerial photos and construct symbols in a key.
- Study the geography of our school and its grounds.

Computing Skills

- Create and debug simple programs.
- Understand what algorithms are.

Theme: Rolvenden Rocks

Science Skills

- Explain the difference between living and non-living things.
- Describe how a habitat provides the basic needs of things living there.
- Describe how some animals have adapted to survive in their environment.
- Explain if an animal is a herbivore, carnivore or omnivore.
- Describe how some animals get their food using basic food chains.

Art Skills

- Create patterns.
- Print with a variety of objects.
- Identify the different forms printing takes.
- Try relief printing.

Key Vocabulary

North, South, East, West, compass, key, map, left, right, shop, high street, village, farm, environment, nature

Rolvenden Rocks!

Physical means natural, something that grew on its own.

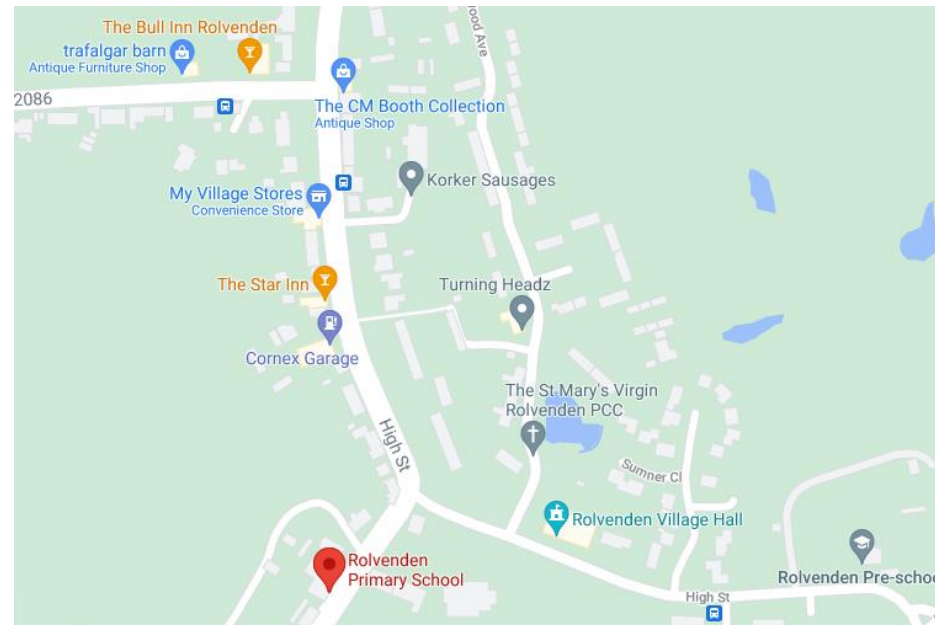
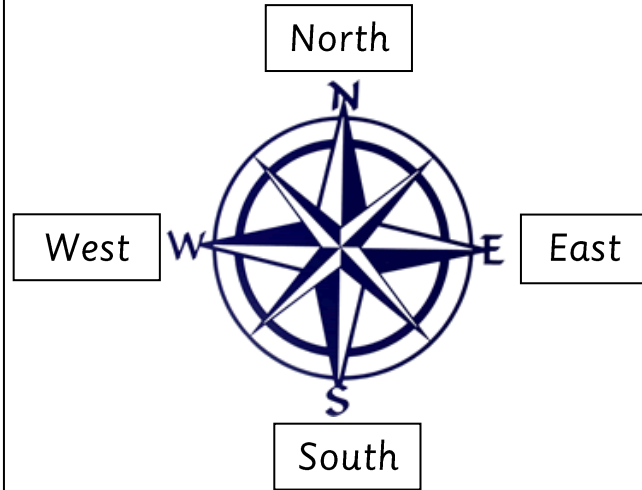
Physical features around Rolvenden:

- Trees and plants
- Hills
- Fields
- Ponds
- Streams

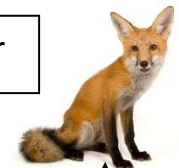
Human means man-made, something a person has built.

Human features around Rolvenden:

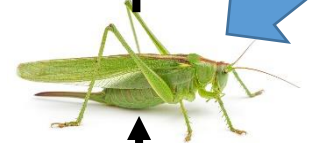
- Houses
- Shops
- Farms
- Roads
- The church
- The war memorial
- Other buildings
- The play park



apex predator



consumer



producer

